



FTHQ - TYLER QUEEN HEADBOARD

*Congratulations on the purchase of your **TYLER QUEEN HEADBOARD**. The **TYLER** Collection is manufactured right here in New Zealand - by New Zealanders, for New Zealanders. A stylish option which combines quality with value, The TYLER Collection is an excellent investment for your home.*

The TYLER Collection is constructed from NZ made MDF, a renewable resource from sustainably managed pine forests. This means you can have complete confidence that with The TYLER Collection, you are making an environmentally responsible choice.

If you have any questions please visit www.farmersfurniture.co.nz or call the manufacturers direct on 0800 100 858.

WHERE TO ASSEMBLE YOUR HEADBOARD

Assemble your Headboard on a clean and smooth surface, free of anything which may damage the finished surfaces. A clean, carpeted floor is ideal. If assembling on a workbench or table we suggest you cover it with the carton the Headboard was packaged in.

Warning! Never leave hardware parts where children can reach them. Small parts may be a choking hazard!

5 YEAR GUARANTEE

The TYLER Collection carries a **5 year guarantee** against defective material or workmanship, excluding misuse and normal wear and tear. Obviously, as this headboard is customer-assembled we cannot guarantee headboard failure or damage from incorrect assembly. **All claims need proof of purchase – to ensure this register your headboard at www.farmersfurniture.co.nz.**

Follow the assembly instructions carefully and take note of the precautions below.



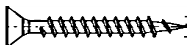
- **Avoid direct sunlight wherever possible.**
- **Keep headboard in a dry place.**
- **Wipe off spilt liquids immediately.**
- **Avoid placing hot items directly on the surface.**
- **Clean with a damp cloth and buff dry with a soft dry cloth - microfibre is ideal.**
- **Do not allow nail polish, removers, deodorant or other damaging chemicals to come into contact with the surface.**

PARTS LIST

Please check you have all the parts before beginning to assemble your headboard. The measurements will help you identify each part. If any parts are missing or damaged please contact us directly for replacements and advice. Do not call the store you bought the headboard from as they will be unable to help you. **Note:** You may find two pieces of polystyrene fitted across the ends of the package. These are for packing purposes only and are not part of the headboard.

QTY	PART	MEASUREMENTS	NOTES
1	Headboard Panel	1520 x 472x 15mm	Black finish
1	Headboard Cap	1600 x 51 x 25mm	Black finish both sides
2	End Packers	472 x 46 x 25mm	Black finish both sides
2	Headboard Legs	950 x 80 x 15mm	Plain MDF

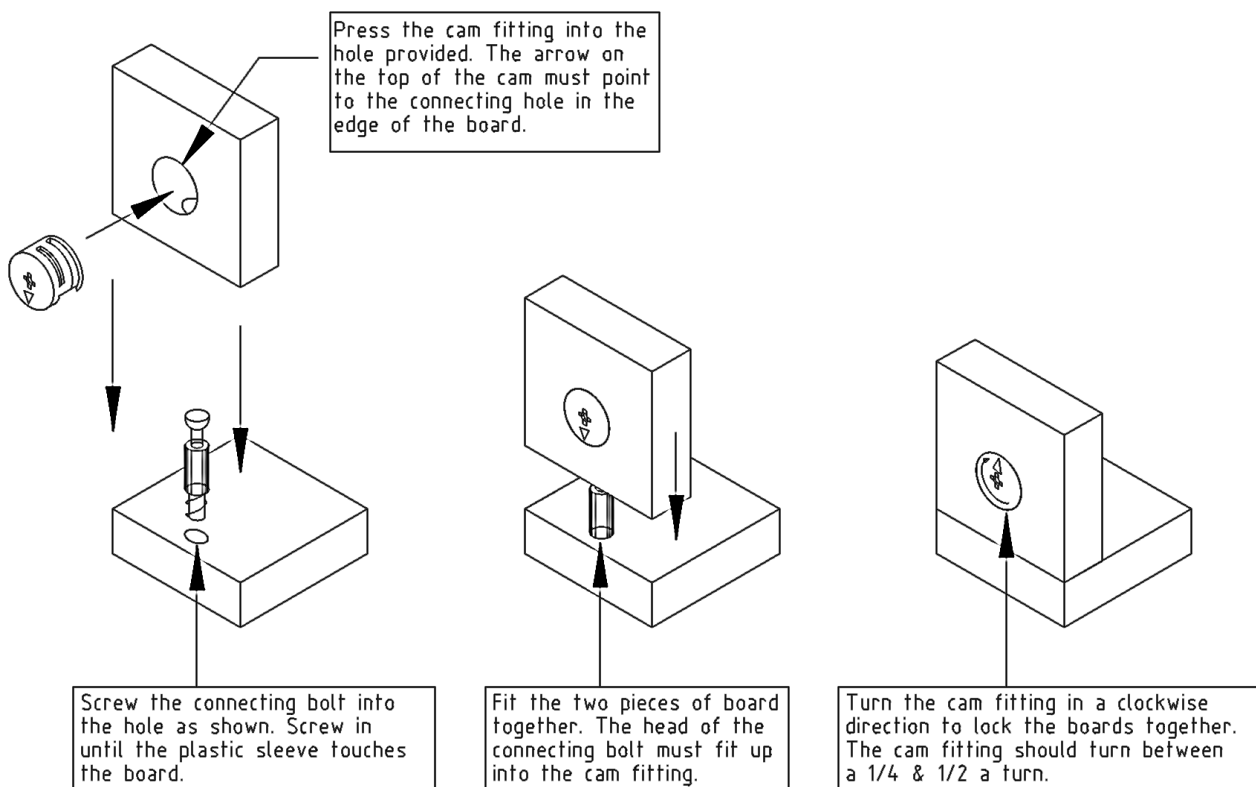
HARDWARE LIST

QTY	PART	CODE	
8	Connecting Bolts	H1	
8	Large Cams	H2	
4	Woodscrews	H9	

CAM INSTALLATION & OPERATION GUIDE

The Cam and Connecting Bolt system is used to put your unit together. The explanation below shows how this system works

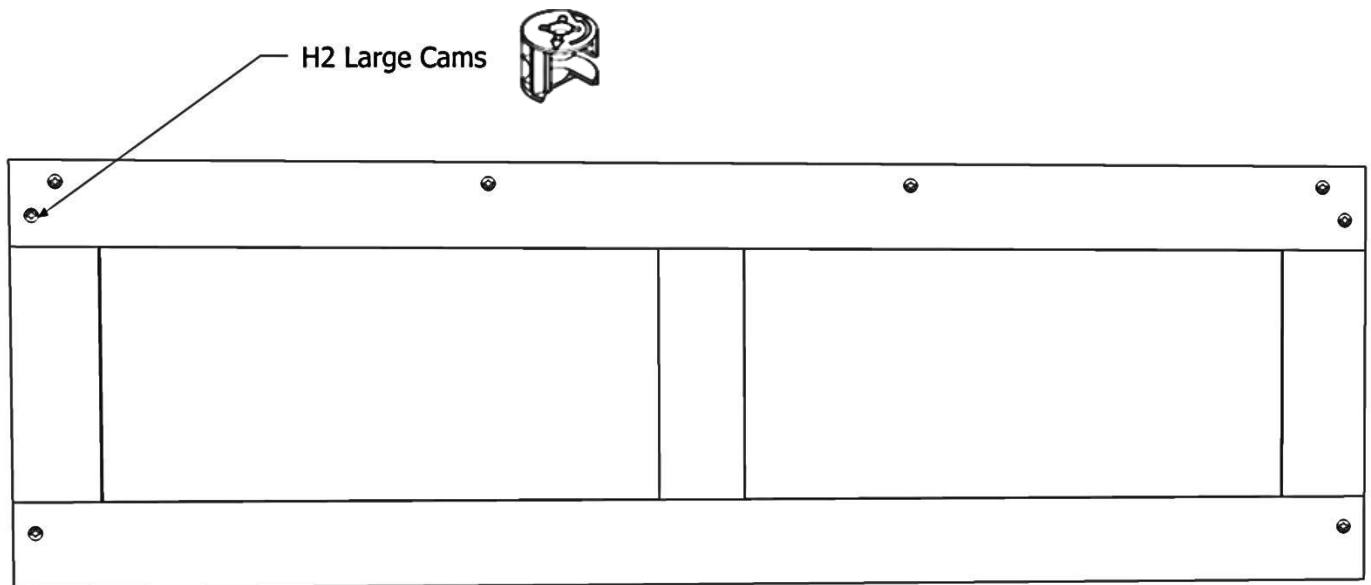
To see a demonstration click on the assembly assistance tab at www.farmersfurniture.co.nz.



INSTALL THE HARDWARE

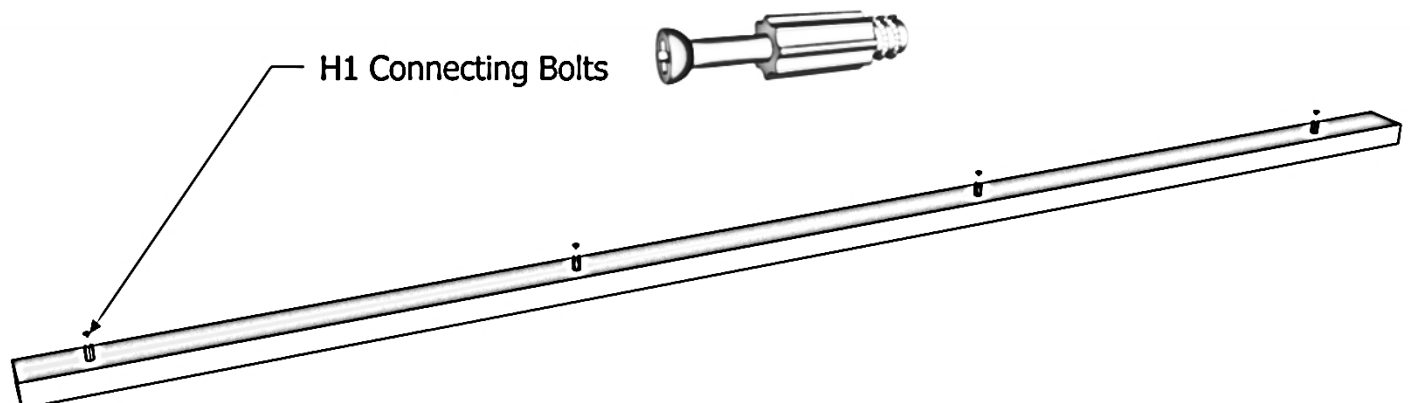
STEP 1 - INSTALL HARDWARE IN HEADBOARD PANEL

- Lay the Headboard Panel finished side down on a surface which is clean and clear of anything that could damage the front of the panel.
- Install the eight **H2 Large Cams** - ensure the arrow on the top of the cam points toward the nearest edge.



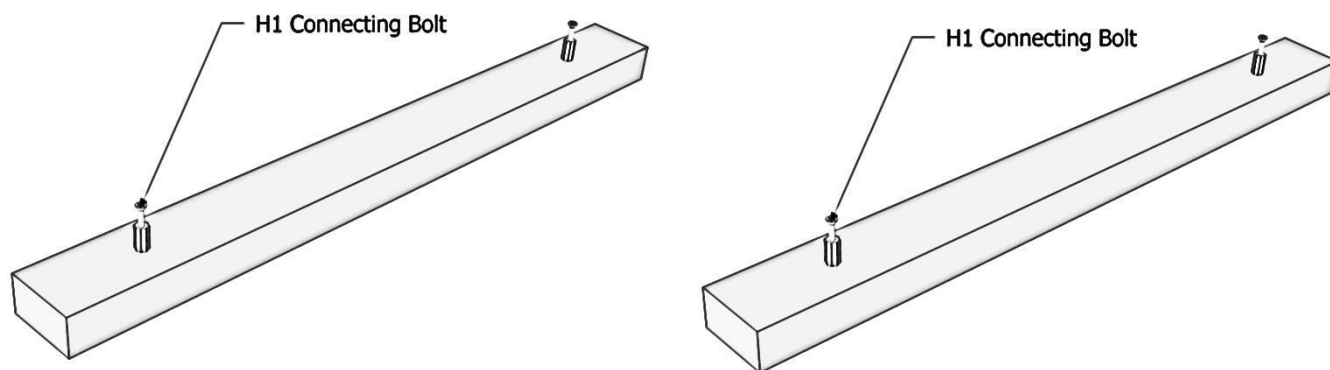
STEP 2 - INSTALL HARDWARE IN HEADBOARD CAP

- Take the Headboard Cap and lay it with the holes facing upwards.
- Screw four **H1 Connecting Bolts** into the holes as indicated below.



STEP 3 - INSTALL HARDWARE IN END PACKERS

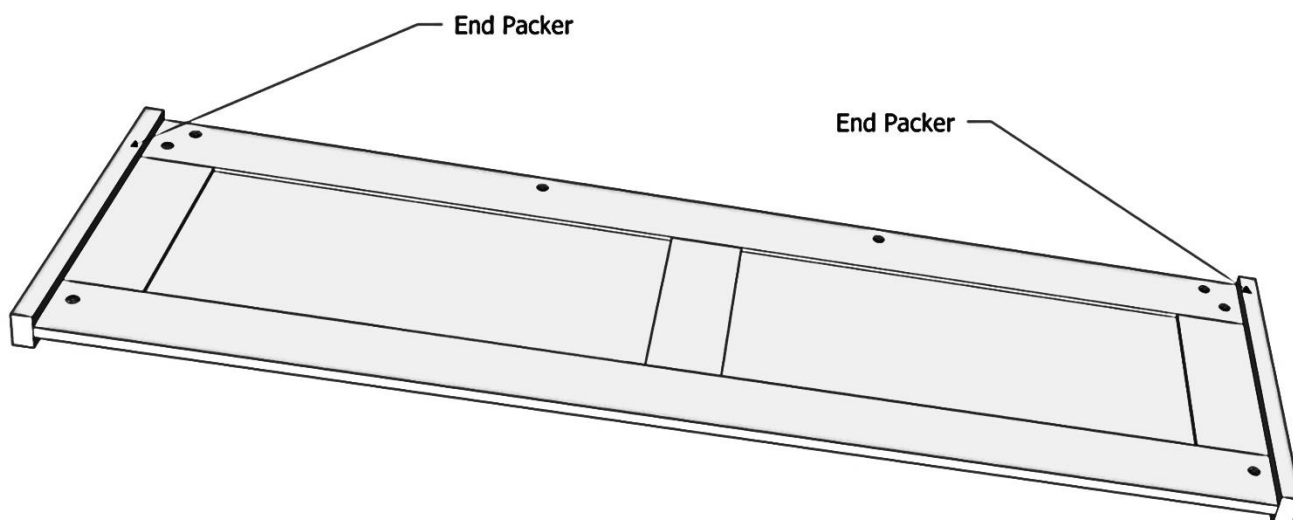
- Take the two End Packers and lay them with the holes facing upwards.
- Screw two **H1 Connecting Bolts** into each Packer as indicated below.



ASSEMBLE THE HEADBOARD

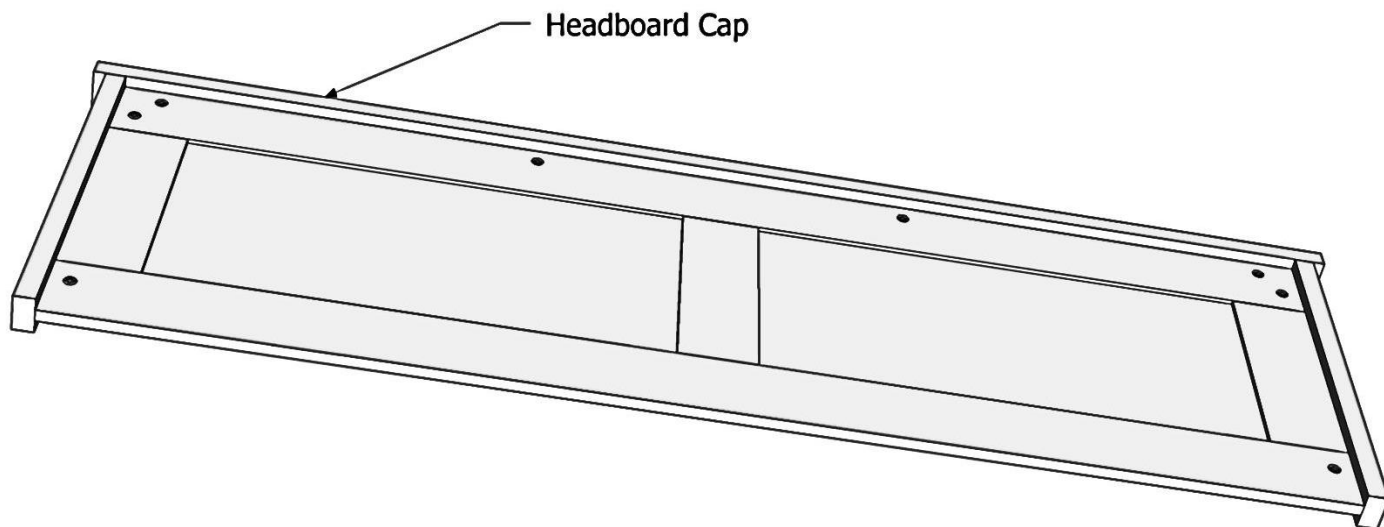
STEP 4 - ATTACH PACKERS TO HEADBOARD PANEL

- Fit the End Packers to the Headboard Panel - ensure the finished edge of the Packer faces down. The Connecting Bolts in the Packers will fit up into the Cams in the Panel.
- Turn the Cams in a clockwise direction to lock the Packers to the panel. **Ensure the cams turn at least ¼ to ½ a turn. Tighten all four cams.**



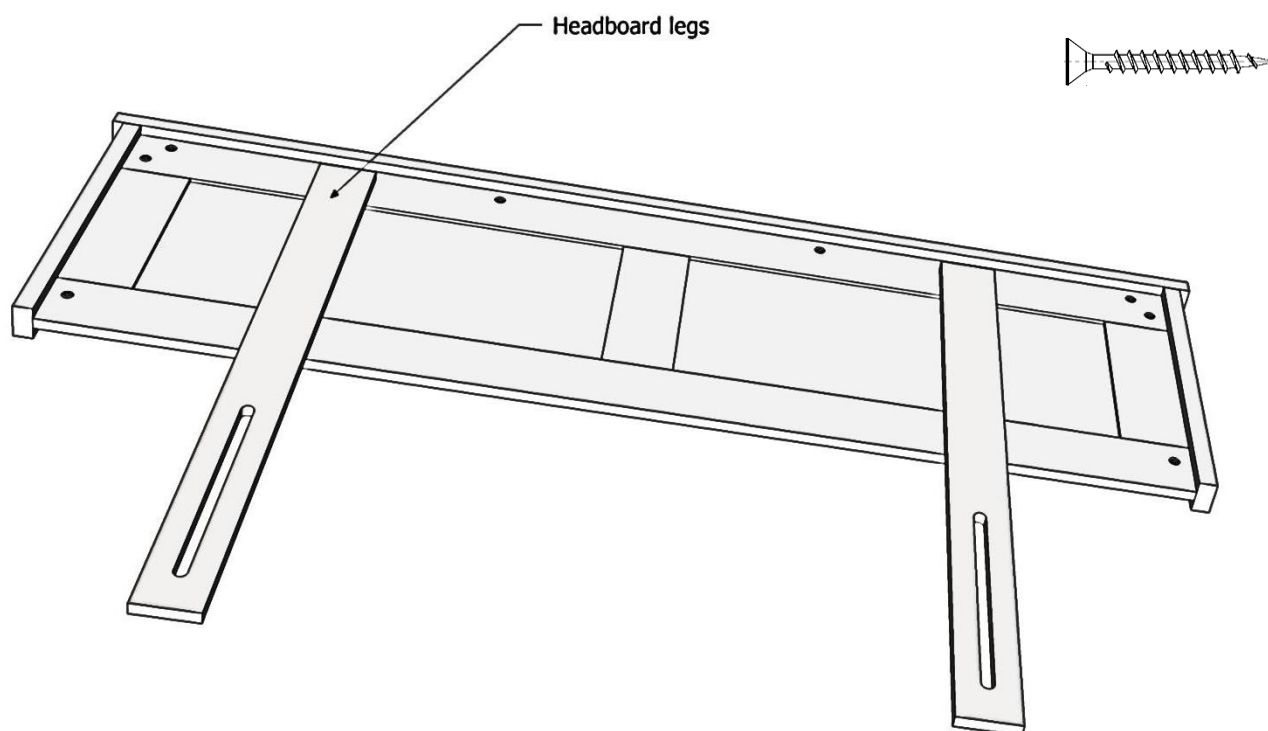
STEP 5 - ATTACH HEADBOARD CAP

- Attach the Headboard Cap to the Headboard Panel in the same way you did the Packers.
- Turn the four Cams in a clockwise direction to lock the Packers to the panel. **Ensure the cams turn at least $\frac{1}{4}$ to $\frac{1}{2}$ a turn. Tighten all three cams.**



STEP 6 - ATTACH HEADBOARD LEGS

- Screw the two Headboard Legs to the back of the Panel as shown below using the four **H9 Woodscrews**. The holes for the screws are predrilled in the Panel and in the Legs.



CONGRATULATIONS, YOUR *TYLER QUEEN HEADBOARD* IS NOW COMPLETE.

THANK-YOU FOR SUPPORTING NEW ZEALAND MADE FURNITURE

Add to your collection....



To view the full TYLER COLLECTION visit...

www.farmersfurniture.co.nz