



TYLER 6 DRAWER LOWBOY

Congratulations on your purchase of your **6 DRAWER LOWBOY**. The **TYLER** Collection is made in New Zealand from 100% New Zealand made MDF – an environmentally sound and renewable resource.

If you require any parts or assembly advice or have any questions please go to www.farmersfurniture.co.nz or call us direct on **0800 100 858**.

WHERE TO ASSEMBLE YOUR LOWBOY

Assemble your Lowboy on a clean and smooth surface, free of anything which may damage the laminated surface. A carpeted floor is ideal. If assembling on a workbench or table we suggest you cover it with the carton the unit was packaged in.

Warning! Never leave hardware parts where children can reach them. Small parts may be a choking hazard!

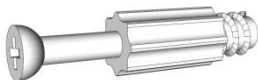



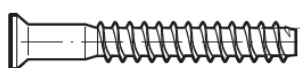

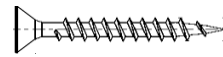




PARTS LIST

Please check you have all the parts before beginning to assembling your cabinet. The measurements will help you identify each part. If any parts are missing or damaged please contact us directly for replacements and advice. Do not call the store you bought the cabinet from as they will be unable to help you. **Note: You will find two pieces of board fitted across the ends of the package. These are for packing purposes only and are not part of the cabinet.**

QTY	PART	MEASUREMENTS	NOTES
1	Top	1196 x 396 x 25mm	Black laminate finish - Blue mark
1	Base	1196 x 396 x 25mm	Black laminate finish - Purple mark
1	LH End	678 x 388 x 25mm	Black laminate finish both sides - Green mark
1	RH End	678 x 388 x 25mm	Black laminate finish both sides - Red mark
1	Division	678 x 364 x 15mm	Black laminate finish on one edge
1	LH Top Drawer Front	560.5 x 195 x 15mm	Black laminate finish one side - Green mark
1	RH Top Drawer Front	560.5 x 195 x 15mm	Black laminate finish one side - Red mark
2	LH Bottom Drawer Front	560.5 x 235 x 15mm	Black laminate finish one side - Green mark
2	RH Bottom Drawer Front	560.5 x 235 x 15mm	Black laminate finish one side - Red mark
6	LH Drawer Sides	340 x 160 x 12mm	Plain MDF 12mm - Green mark
6	RH Drawer Sides	340 x 160 x 12mm	Plain MDF 12mm - Red mark

6	Drawer Backs	507 x 155 x 12mm	Plain MDF 12mm
6	Drawer Bottoms	517 x 339 x 4mm	Plain MDF 4mm
1	Back Panel - Top	351 x 1150 x 4mm	Plain MDF 4mm
1	Back Panel - Bottom	351 x 1150 x 4mm	Plain MDF 4mm

HARDWARE LIST

QTY	PART	CODE	
18	Connecting Bolts	H1	
6	Large Cams	H2	
12	Small Cams	H3	
24	Drawer Slide Screws	H4	
6	Large Screws	H5	
24	Small Woodscrews	H6	
29	31mm Wood screws	H9	
18	Dowels	H15	
5	Black Plastic Feet	H16	
6	Sets of metal drawer slides	H21	
1	Bag of small Nails	H27	
6	Tyler Handles & Handle Screws		

COLOUR CODING

To help identify the parts, the main components are colour coded with a pen mark on the back edge of the panel. (The edge without any laminate on it.)

- | | |
|-----------------|---|
| ○ RED | Right Hand Parts. (E.g. RH End, RH Drawer Side.) |
| ○ GREEN | Left Hand Parts. (E.g. LH End, LH Drawer Side.) |
| ○ BLUE | Tops |
| ○ PURPLE | Bases |

5 YEAR WARRANTY

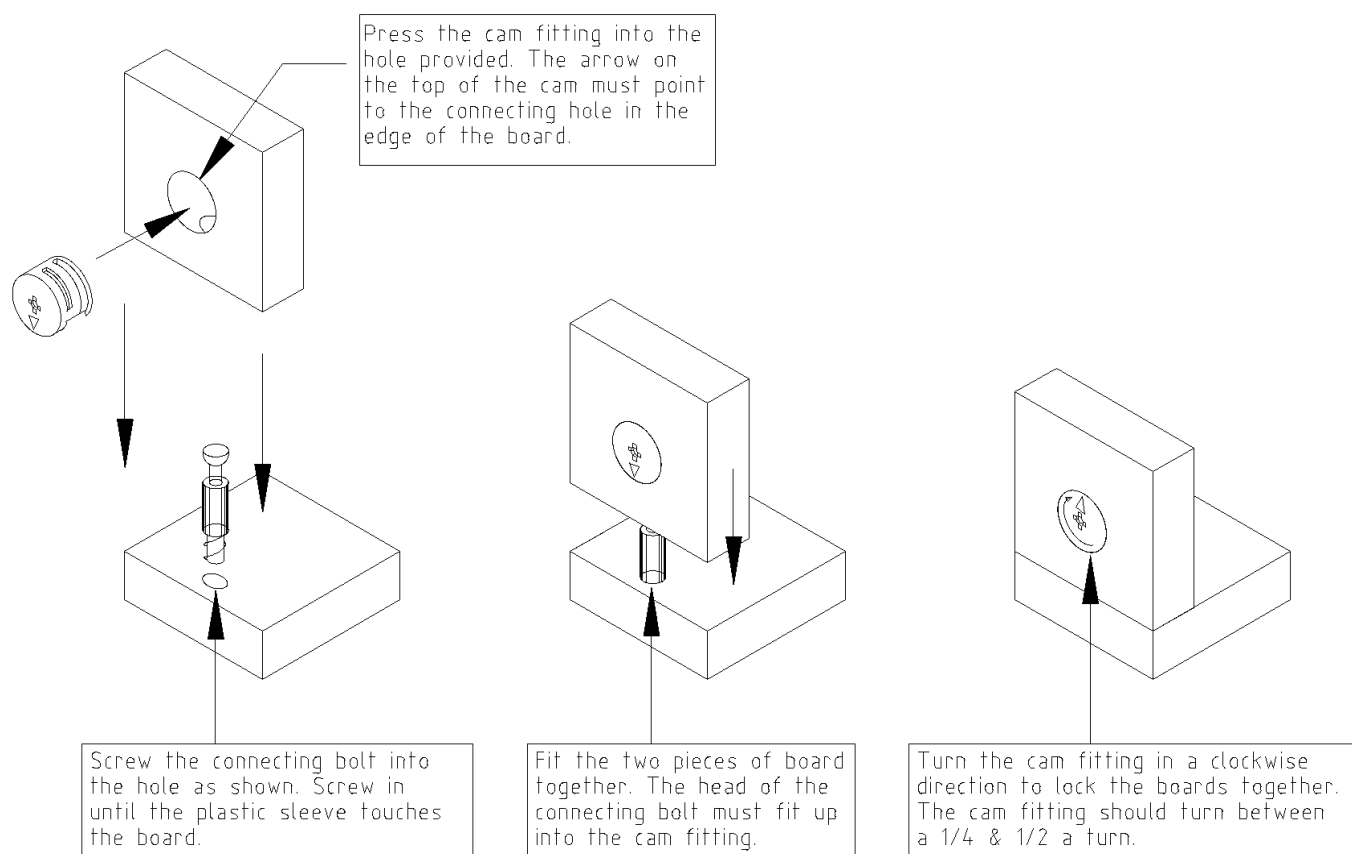
This furniture carries a **5 year warranty** against defective material or workmanship, excluding misuse and normal wear and tear. Obviously, as this unit is customer-assembled we cannot guarantee cabinet failure or damage from incorrect assembly. **All claims need proof of purchase – to ensure this register at www.farmersfurniture.co.nz.**

Follow the assembly instructions carefully and take note of the precautions below.

- **Avoid direct sunlight wherever possible.**
- **Keep cabinet in a dry place.**
- **Wipe off spilt liquids immediately.**
- **Avoid placing hot items directly on the surface.**
- **Clean with a soft cloth.**
- **Do not allow nail polish, removers, deodorant etc. to come into contact with the surface.**

CAM INSTALLATION & OPERATION GUIDE

The Cam and Connecting Bolt system is used to put your unit together. Below is an explanation of how this system works. To see a demonstration go to the assembly assistance tab on www.farmersfurniture.co.nz.



For assembly advice or parts go to www.farmersfurniture.co.nz or call 0800 100 858

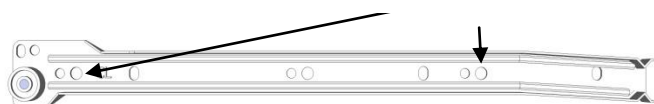
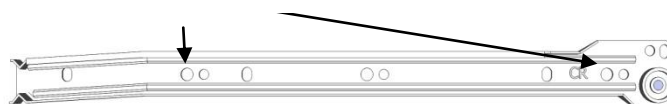
DRAWER SLIDES GUIDE

Your pack will contain six sets of Metal Drawer Slides. These are bundled together with adhesive tape. Each set comprises of 4 components. Undo the tape on one set at a time and separate the parts into four piles.

LEFT HAND PART (**DL**)RIGHT HAND PART (**DR**)

The Drawer Slide components shown above are attached to the **drawer**. They have the letters **DR** or **DL** stamped on them to indicate left hand or right hand components. Put these parts aside for attaching to the drawers later on.

Use these holes

LEFT HAND PART (**CL**)RIGHT HAND PART (**CR**)

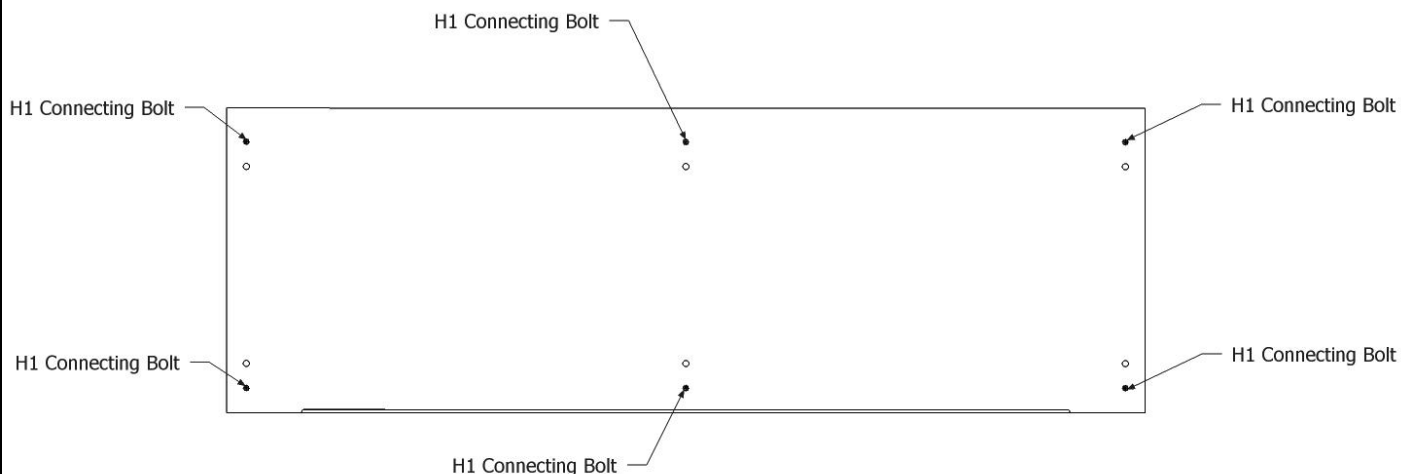
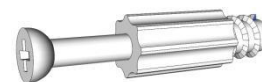
The Drawer Slide components shown above are to be attached to the **cabinet**. They have letters **CR** or **CL** stamped on them to indicate left hand or right hand components.

INSTALL THE HARDWARE

STEP 1

Lay the Top of the Lowboy laminate side down. Ensure the surface is clean and clear of anything that may damage the laminate.

Screw the six **H1 Connecting Bolts** into the holes as indicated.



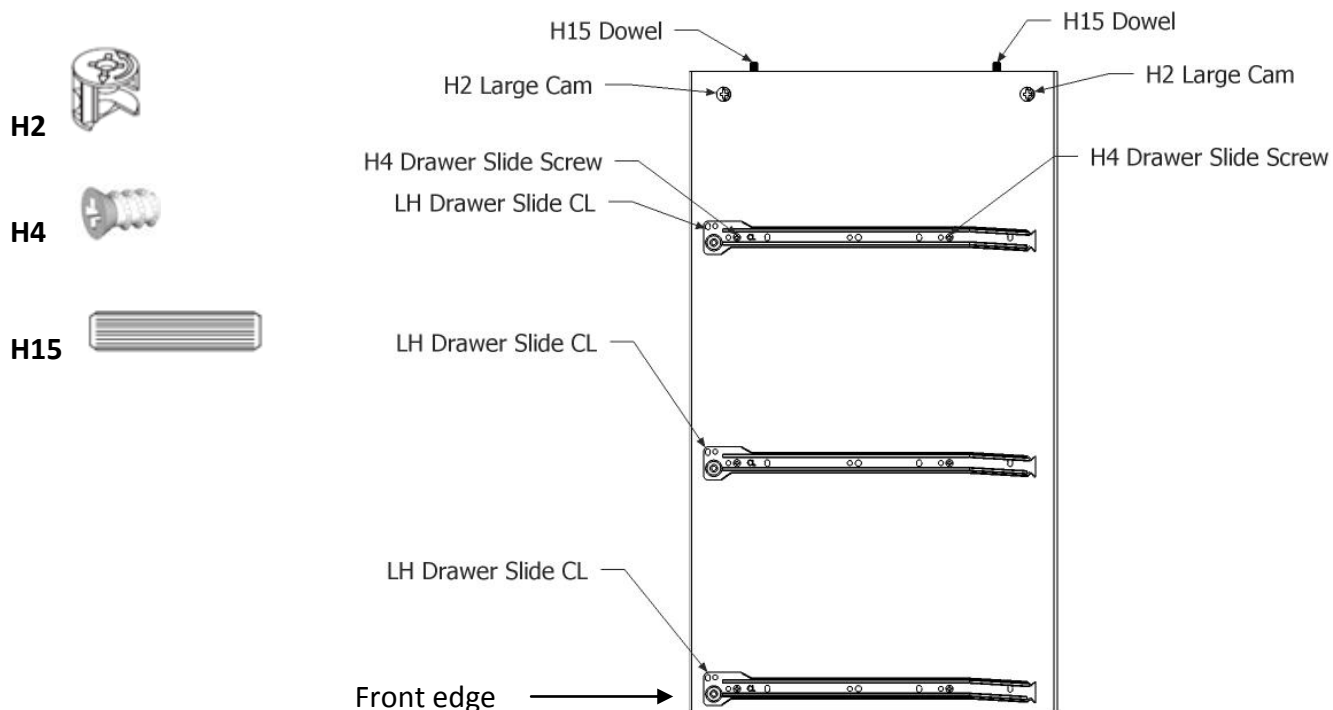
STEP 2

Take the LH End and lay it on a clean, clear surface with the holes facing upwards.

Take three **LH Cabinet Drawer Slides (CL)** and screw them to the LH End using the **H4 Drawer Slide Screws**. Use the holes as indicated in the diagram below - each slide requires two screws.

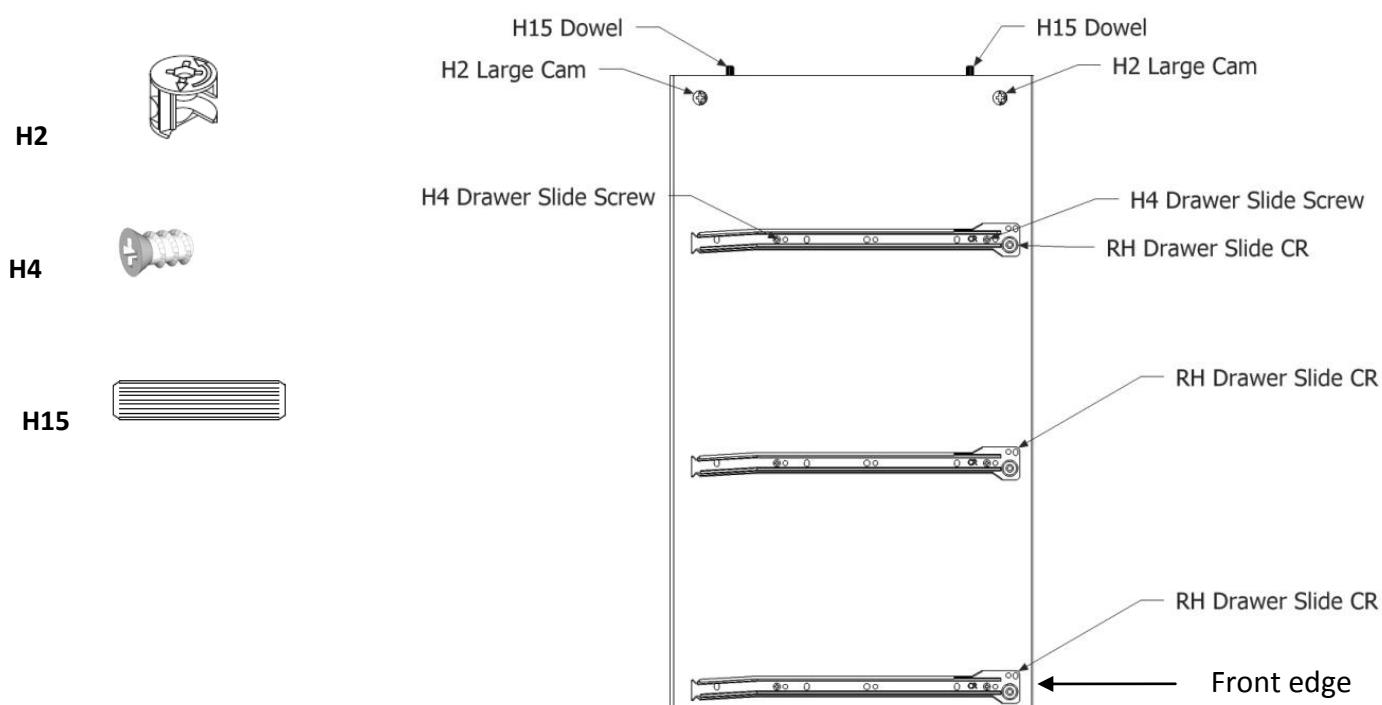
Insert two **H2 Large Cams** as indicated. Make sure the arrow on top of the cam points towards the top edge of the End.

Push two **H15 Dowels** into the top edge of the End.



STEP 3

Repeat previous step with the Right Hand End.



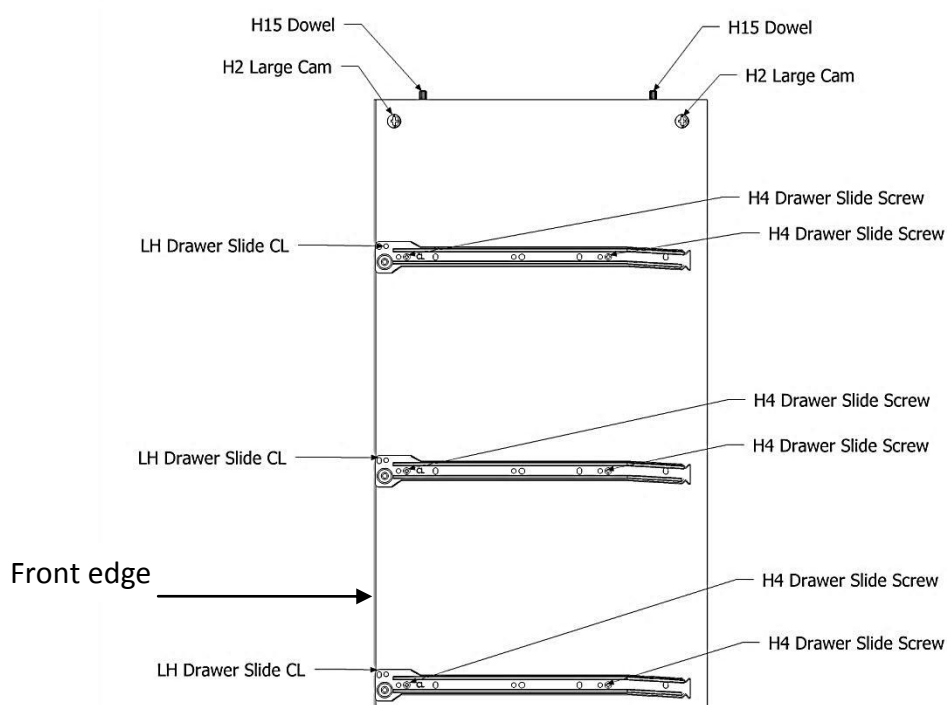
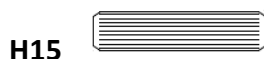
STEP 4

Take the Division and lay it with the Large Cam holes facing upwards.

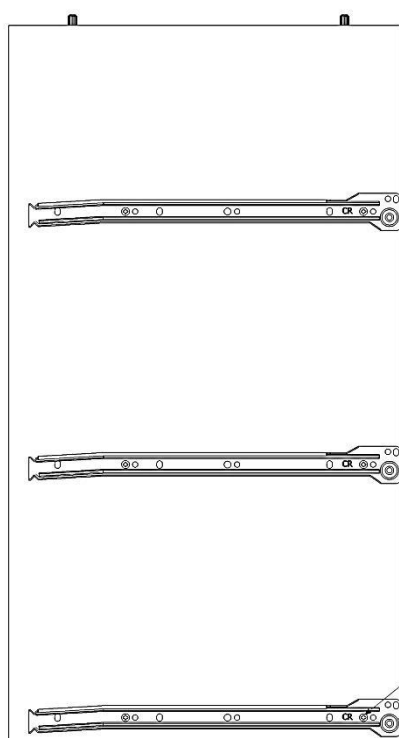
Attach the last three **LH Cabinet Drawer Slides (CL)** to the Division using the **H4 Drawer Slide Screws**. Use the holes as indicated in the diagram below - each slide requires two screws.

Insert two **H2 Large Cams** as indicated. Make sure the arrow on top of the cam points towards the top edge of the Division.

Push two **H15 Dowels** into the top edge of the Division.



Turn the Division over.



Attach the last three **RH Cabinet Drawer Slides (CR)** to the Division using the **H4 Drawer Slide Screws**.

- each slide requires two H4 screws



H4 Drawer Slide Screws
(2 Per Drawer Slide)

RH Drawer Slide

ASSEMBLE THE LOWBOY

STEP 1

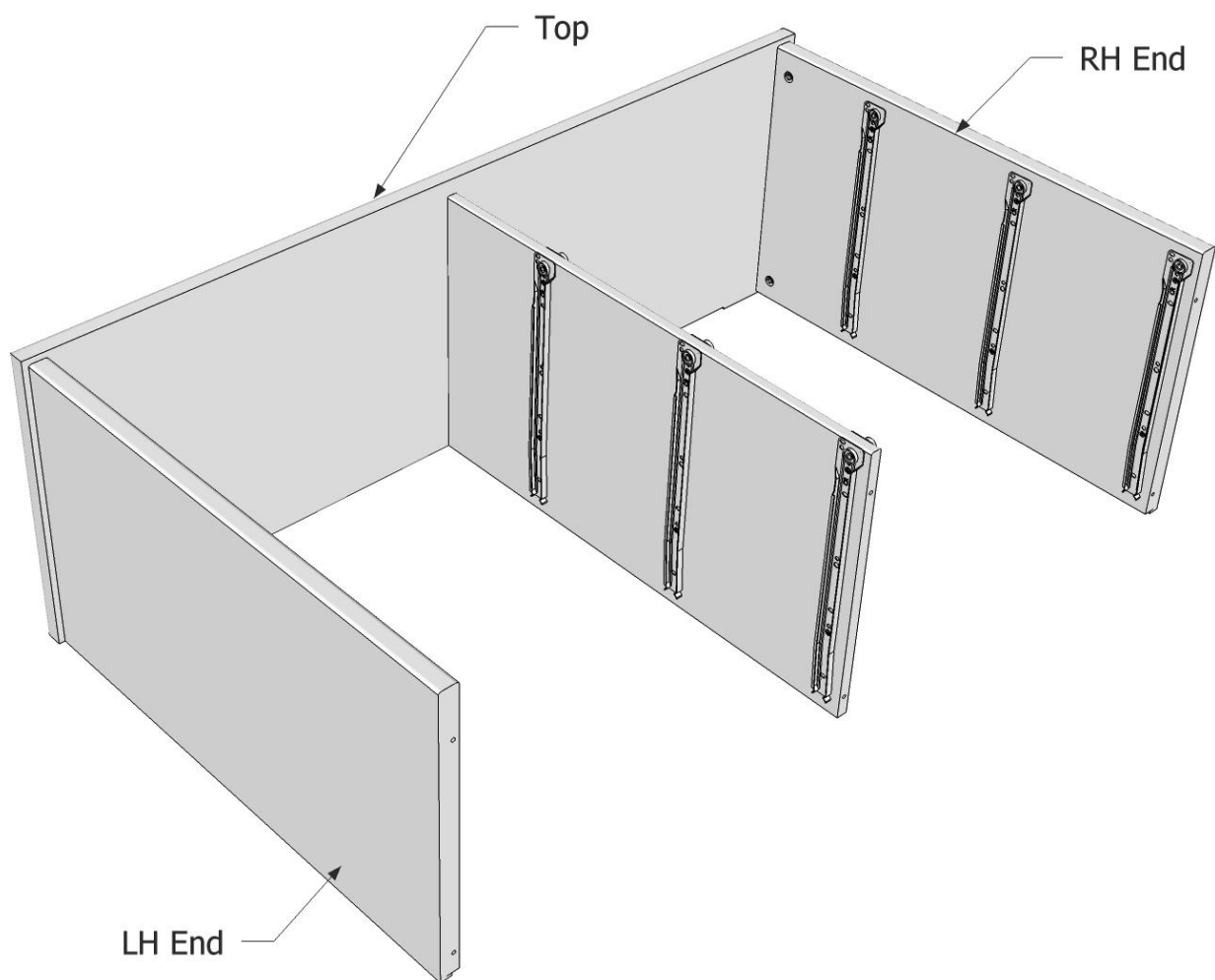
Stand the Top on its back edge.

Fit the LH End, RH End and the Division to the underside of the Top. The Connecting Bolts in the Top will fit down into the Large Cams in the Ends and Division.

Turn the Large Cams in a clockwise direction to lock the Top to the Ends and Division. **NOTE:** Ensure the Large Cams turn a least a $\frac{1}{4}$ to $\frac{1}{2}$ a turn.

Tighten **all** six Large Cams.

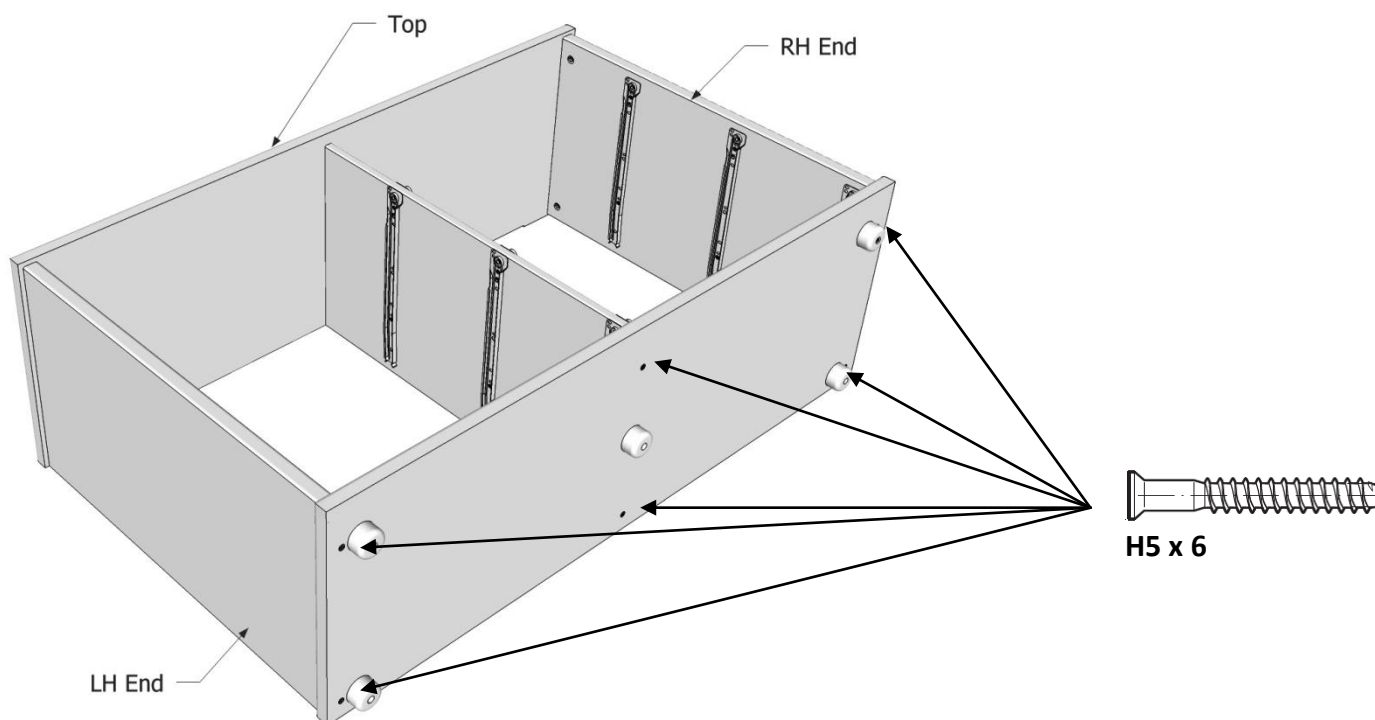
To see a demonstration of how the cam and connecting bolt works, go to the assembly assistance tab at www.farmersfurniture.co.nz



STEP 2

Attach the Base using the six **H5 large Screws**. Ensure the laminated side of the Base faces into inside of the Lowboy.

Next attach the five **H16 Black Plastic Feet** using five **H9 Woodscrews**

**STEP 4**

Lay the unit on its front edge - make sure the surface is clean and clear of anything that may damage the black finish.

The Back Panel of your Lowboy is made up of two pieces.

1 x Top Panel with handle holes and a groove in the long edge

1 x Bottom Panel without cut outs and with a tongue along the long edge.

Fit the Top Panel into place. Fit the Bottom Panel tightly to the Top Panel.

Ensure the panels fit tightly together. Make sure the panel is sitting square, hard against the Top and the Ends of the cabinet are not bowed outwards. Nail the Back Panel in place with the Small Nails provided. Space the nails about 10 to 15 cm apart. Stand the cabinet upright.

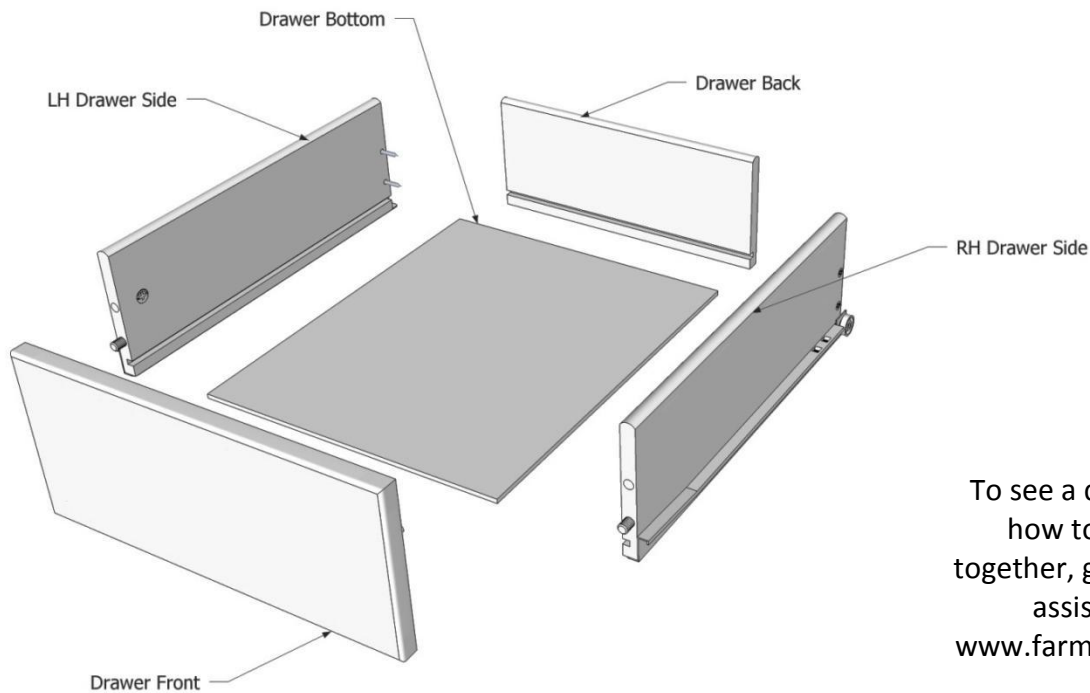


ASSEMBLE THE DRAWERS

Your **TYLER Lowboy** has six drawers - three RH Drawers and three LH Drawers. The RH Drawer Fronts will have a small red mark on the back and the LH Drawer Fronts will have a small green mark. When installing these in the cabinet after assembling them, (See step 4) take care to get them around the correct way. (If the drawer fronts overlap when they are installed please remove them and swap the whole drawer over.)

The two narrower drawers go at the top of the Lowboy.

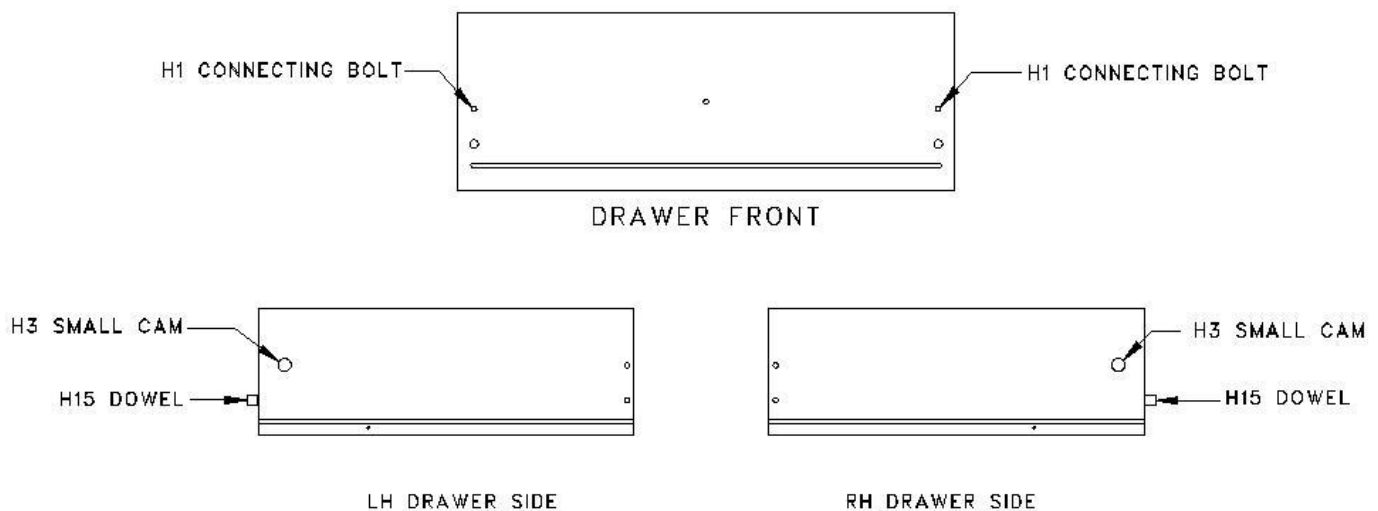
All drawers are made up of the same parts and therefore are constructed in the same way.



To see a demonstration of how to put a drawer together, go to the assembly assistance tab at www.farmersfurniture.co.nz

STEP 1

Install the hardware as shown below.



Note: Be sure that the arrow on the top of the Cam points to the end of the drawer side.



H15 Dowel



H3 Small Cam



H1 Connecting Bolt

STEP 2

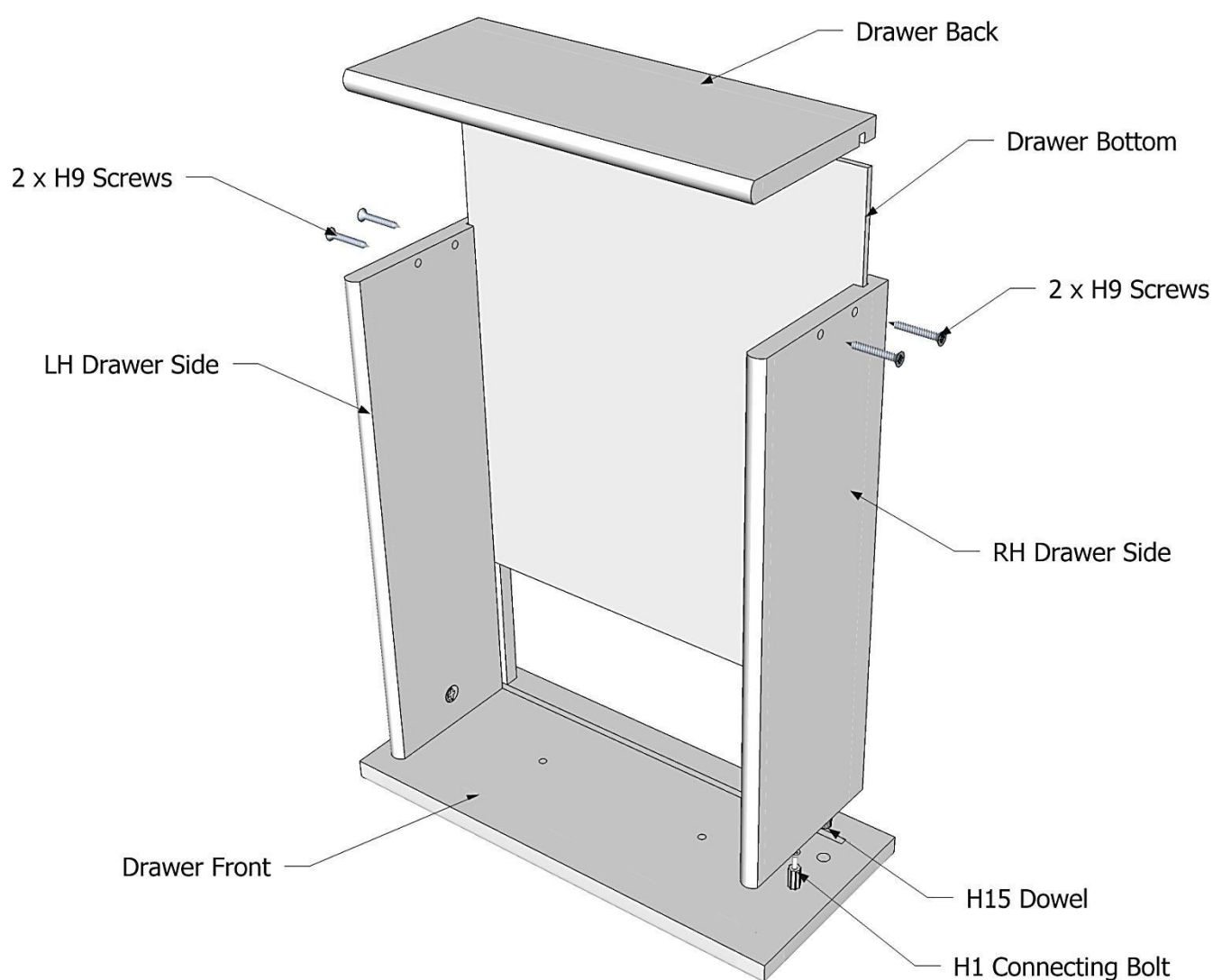
Lay the Drawer Front face down on a smooth, clean surface.

Attach the LH and RH Drawer Sides by fitting them down into place over the Connecting Bolts installed in the Drawer Front.

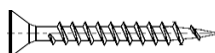
Turn the Small Cams clockwise to lock the Drawer Sides in place.

Next slide the Drawer Bottom into place in the grooves in the Drawer Sides and Drawer Front.

Fit the Drawer Back into place between the Drawer Sides and secure with four **H9 Woodscrews** as shown below.



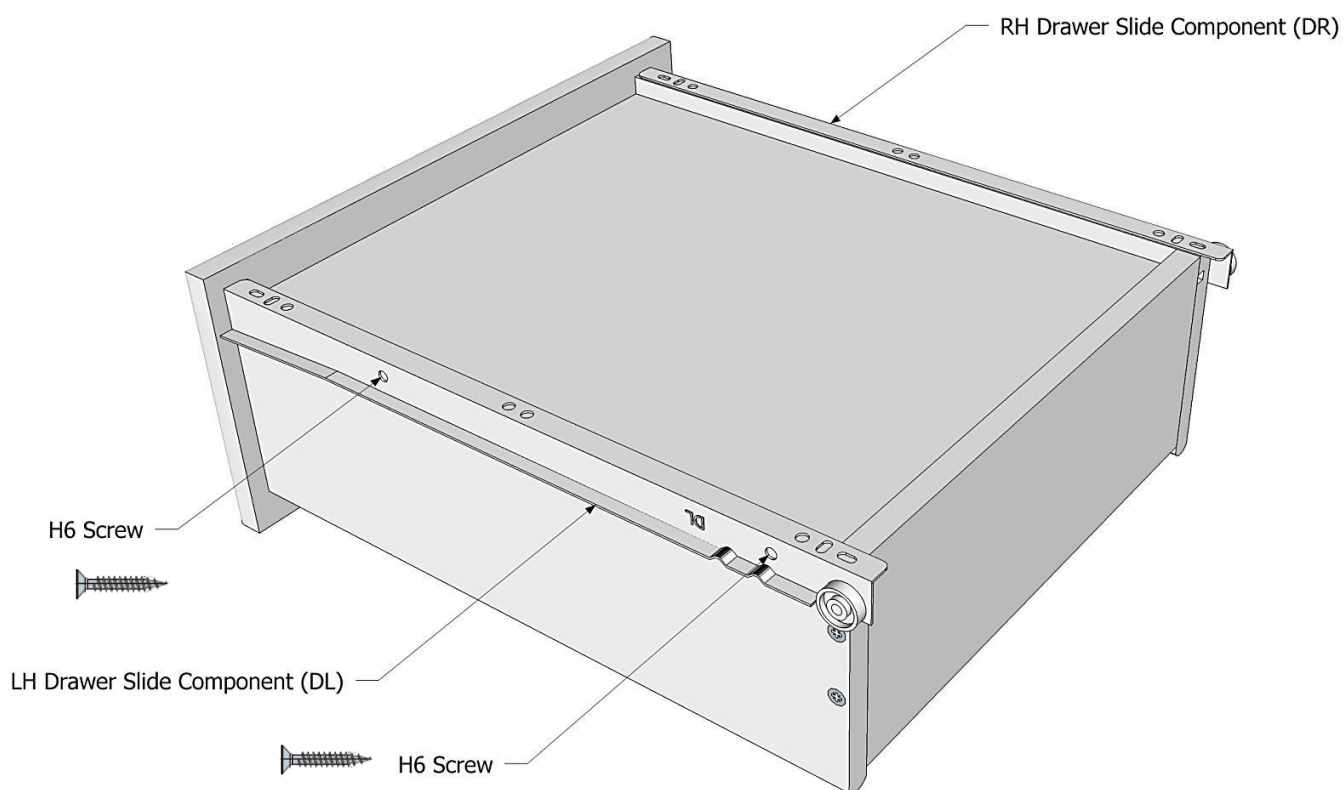
H9 Woodscrew



STEP 3

Turn the drawer upside-down as shown and attach the Drawer Slides (**DR** and **DL**) with the four **H6 Small Screws** as shown below. Each slide requires two screws.

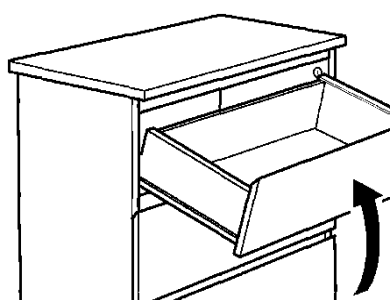
The DL goes on the LH Drawer Side and the DR goes on the RH Drawer Side.

**STEP 4**

Turn the drawer over.

Attach the Drawer Handle using the screws provided with the handle.

Fit the drawers into the cabinet. Start with the top drawers and work your way down.



Angle the drawer slightly to ensure that the wheel at the back of the drawer slide goes behind the front wheel on the cabinet slide. Then lift the drawer up and slide it into the channel of the drawer slide.



CONGRATULATIONS, YOUR TYLER 6 DRAWER LOWBOY IS NOW COMPLETE.

THANK-YOU FOR SUPPORTING NEW ZEALAND MADE FURNITURE

Add to your collection....

